



The Dolomite Centre Ltd
 Unit 1, Anglian Business Park, Orchard Road,
 Royston, Hertfordshire, SG8 5TW, UK

T: +44 (0)1763 242491
F: +44 (0)1763 246125
E: sales@dolomite-microfluidics.com
W: www.dolomite-microfluidics.com

Dolomite Microfluidics – North America Office
 Blacktrace Inc, 29 Albion Place
 Charlestown, MA 02129, USA

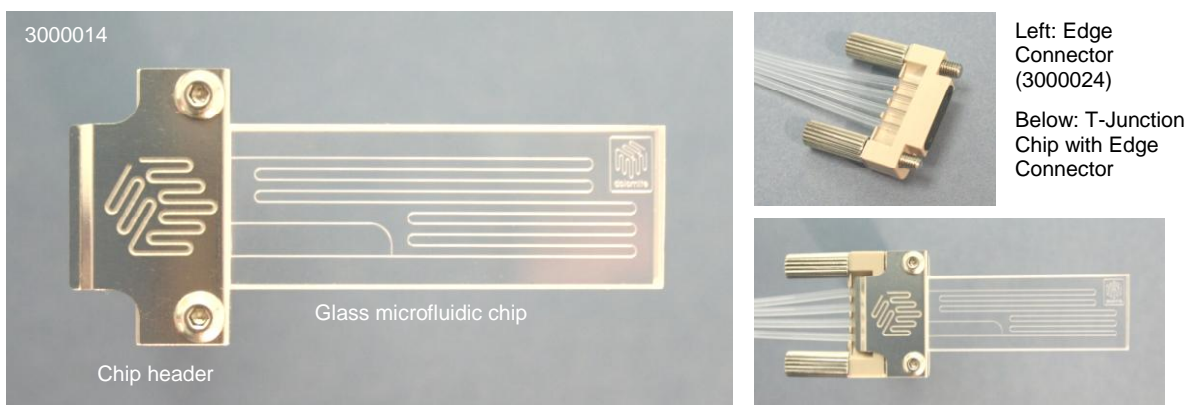
C: 617 803 6655
T: 617 848 1121
F: 617 500 0136
E: salesus@dolomite-microfluidics.com

INFORMATION SHEET

Part name	Mitos T-Junction Chip with Header	Part number	3000014
-----------	-----------------------------------	-------------	---------

Description

The T-Junction Chip is a glass microfluidic device designed for a range of applications including mixing fluids, microreactions and droplet formation. The chip is supplied with a chip header (below). The header allows connection to the Mitos Edge Connector (part number 3000024).



Benefits

- Compact
- Low dead volume
- Quick connect/disconnect
- High visibility (excellent access for optics)
- Extremely smooth channel surface
- Wide temperature and pressure range
- Low cost
- Excellent chemical compatibility

	Chip Specification	Value
1	Number of inputs	2
2	Number of outputs	1
3	Internal channel cross-section	100 μm x 110 μm (depth x width)
4	Channel length after T-junction	278 mm (feed channels = 20 mm and 22 mm)
5	Volume of channel after T-junction	2.5 μl
6	Back pressure with 100 $\mu\text{l}/\text{min}$ flow (water)	1.5 Bar
7	Surface roughness of channels (R_a)	5 nm
8	Chip size	45.0 mm x 15.0 mm
9	Chip top layer thickness	2.0 mm
10	Chip base layer thickness	2.0 mm
11	Operating pressure	30 Bar with edge connector (higher with other connection methods)
12	Operating temperature	250° C with edge connector (higher with other connection methods)
13	Material	Glass
14	Fabrication process	HF etching and thermal bonding

Channel cross-sectional profile

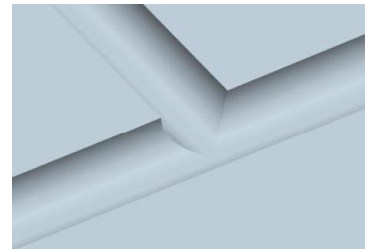
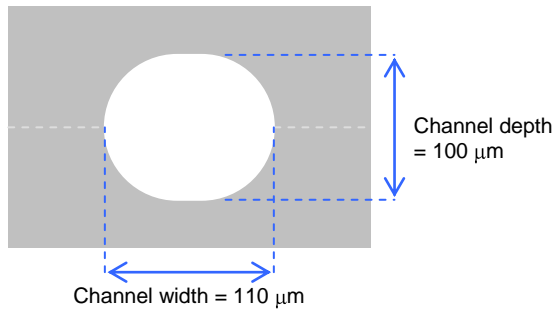


Image of T-junction (base layer only)

Custom options

The channel may be etched to different depths, for example from 20 μm x 30 μm up to 700 μm x 710 μm (depth x width). The top layer or base layer can also be left un-etched giving a semi-circular channel cross-section.

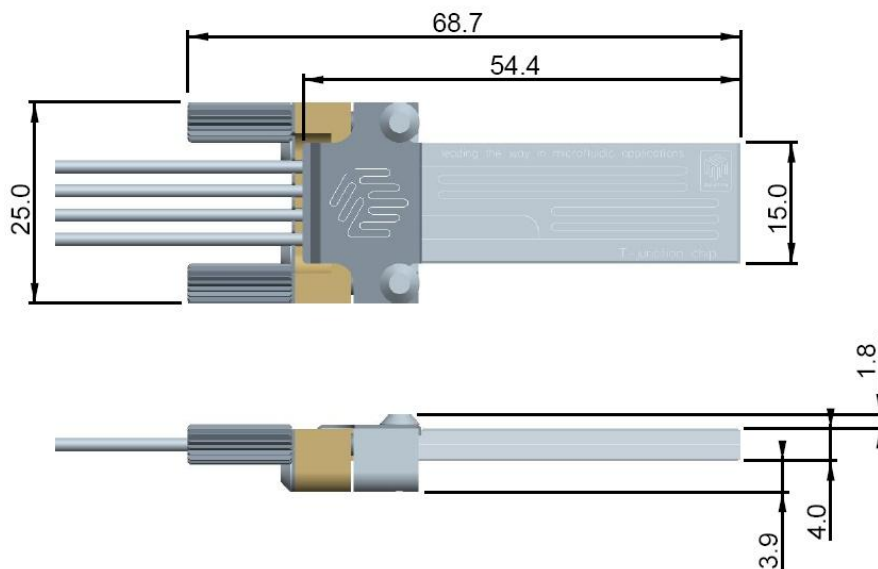
Custom channel layouts can also be specified.

Custom surface coatings

The channel surface is hydrophilic. The chip can also be supplied with:

- Hydrophobic coating on channel surfaces
- Platinum coating on channel surfaces

Edge connector geometry



Optical transmission (next page)

